

FOTO **GEO**REFERENZIATE

ZONA SAN MARCELLINO

Nicola Costanzo

Associazione

Vogliamo una San Marcellino migliore e pulita

[vai su Google Map](#)

| | |
|--|--|
| Camera: | Samsung GT-I9301I |
| Lens: | 3.7 mm (Max aperture f2.6) (shot wide open) |
| Exposure: | Auto exposure, Program AE, 1/170 sec, f/2.6, ISO 80 |
| Flash: | none |
| Date: | November 26, 2014 1:29:15PM (timezone not specified) (1 day, 3 hours, 16 minutes, 6 seconds ago, assuming image timezone of 1 hour ahead of GMT) |
| Location: | Latitude/longitude: 40° 59' 32.6" North, 14° 10' 4.9" East (40.992382, 14.168036) |
| Location guessed from coordinates: <i>Via Enrico de Nicola, 17, 81030 San Marcellino CE, Italia</i> | |
| Map via embedded coordinates at: Google , Yahoo , WikiMapia , OpenStreetMap , Bing (also see the Google Maps pane below) | |
| Altitude: 74 meters (243 feet) Timezone guess from earthtools.org: 1 hour ahead of GMT | |

Extracted 512 × 384 30-kilobyte "Composite: ThumbnailImage" JPG
 Displayed here at 88% width (1/53 the area of the original)



Click image to isolate; click this text to show histogram

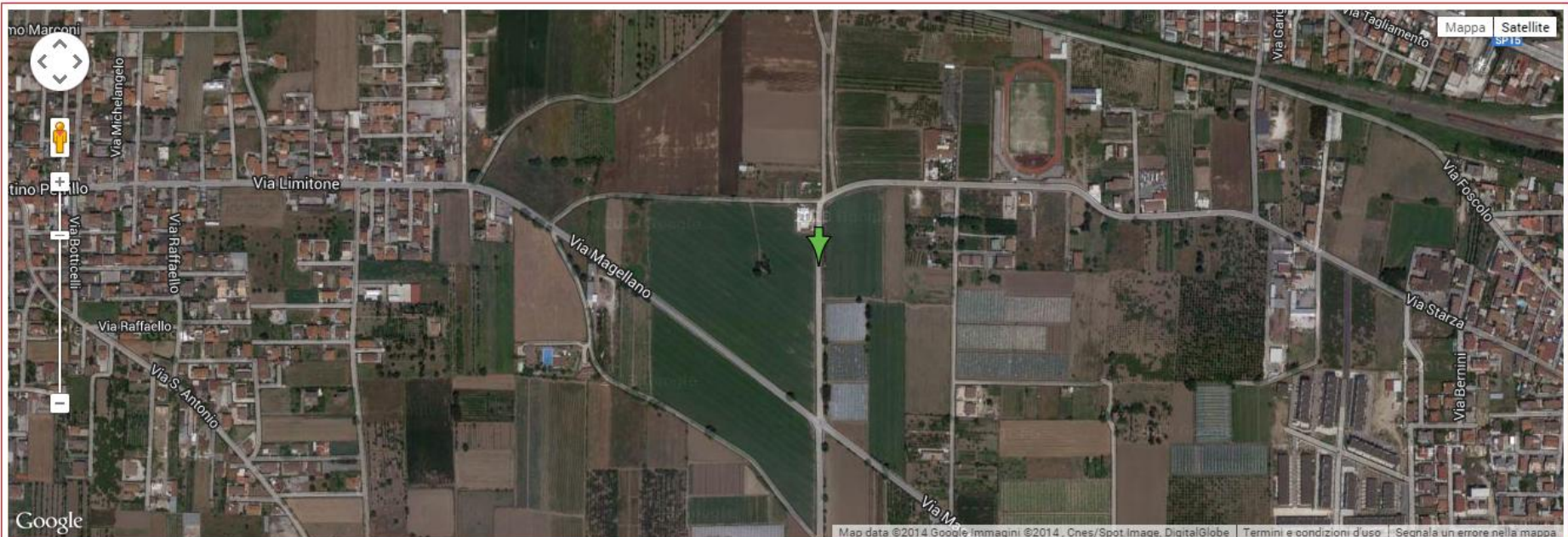






| | |
|-----------|---|
| Camera: | Samsung GT-I9301I |
| Lens: | 3.7 mm (Max aperture f/2.6) (shot wide open) |
| Exposure: | Auto exposure. Program AE, 1/709 sec, f/2.6, ISO 80 |
| Flash: | none |
| Date: | November 26, 2014 1:33:09PM (timezone not specified) (1 day, 4 hours, 30 minutes, 59 seconds ago, assuming image timezone of 1 hour ahead of GMT) |
| Location: | Latitude/longitude: 40° 59' 26.3" North, 14° 9' 26.4" East (40.990646, 14.157346) Location guessed from coordinates: <i>Strada Provinciale Casapesenna - San Marcellino, 81030 San Marcellino CE, Italia</i> Map via embedded coordinates at: Google , Yahoo , WikiMapia , OpenStreetMap , Bing (also see the Google Maps pane below) Altitude: 93 meters (305 feet) Timezone guess from earthtools.org: 1 hour ahead of GMT |
| File: | 2,448 × 3,264 JPEG (8.0 megapixels) |

Extracted 512 × 384 16-kilobyte "Composite"
Displayed here at 100% width (0% the area of the original)





| | |
|-----------|--|
| Camera: | Samsung GT-I9301I |
| Lens: | 3.7 mm (Max aperture f/2.6) (shot wide open) |
| Exposure: | Auto exposure, Program AE, $\frac{1}{170}$ sec, f/2.6, ISO 80 |
| Flash: | none |
| Date: | November 26, 2014 1:39:29PM (timezone not specified) (1 day, 4 hours, 38 minutes, 3 seconds ago, assuming image timezone of 1 hour ahead of GMT) |
| Location: | Latitude/longitude: 40° 59' 29.6" North, 14° 10' 16.2" East (40.991554, 14.171165) |
| | Location guessed from coordinates: <i>Corso Europa, 111, 81030 San Marcellino CE, Italia</i> |
| | Map via embedded coordinates at: Google , Yahoo , WikiMapia , OpenStreetMap , Bing (also see the Google Maps pane below) |
| | Altitude: 76 meters (249 feet) Timezone guess from earthtools.org: 1 hour ahead of GMT |

Extracted 512 × 384 35-kilobyte "Composite:ThumbnailImage" JPG
Displayed here at 88% width ($\frac{1}{53}$ the area of the original)



Click image to isolate; click this text to show histogram










Target file: 20141127_093014.jpg

| | |
|--|--|
| Camera: | Samsung GT-I9301I |
| Lens: | 3.7 mm (Max aperture f2.6) (shot wide open) |
| Exposure: | Auto exposure, Program AE, 1/815 sec, f/2.6, ISO 80 |
| Flash: | none |
| Date: | November 27, 2014 9:30:13AM (timezone not specified) (9 hours, 29 seconds ago, assuming image timezone of 1 hour ahead of GMT) |
| Location: | Latitude/longitude: 40° 58' 54.6" North, 14° 9' 47.4" East (40.981823, 14.163176) |
| Location guessed from coordinates: <i>Via Montale Eugenio, 81038 Trentola-ducenta CE, Italia</i> | |
| Map via embedded coordinates at: Google , Yahoo , WikiMapia , OpenStreetMap , Bing (also see the Google Maps pane below) | |
| Altitude: 54 meters (177 feet) Timezone guess from earthtools.org: 1 hour ahead of GMT | |




 Extracted 512 × 384 48-kilobyte "Composite:ThumbnailImage" JPG
 Displayed here at 88% width (1/53 the area of the original)



Click image to isolate; click this text to show histogram

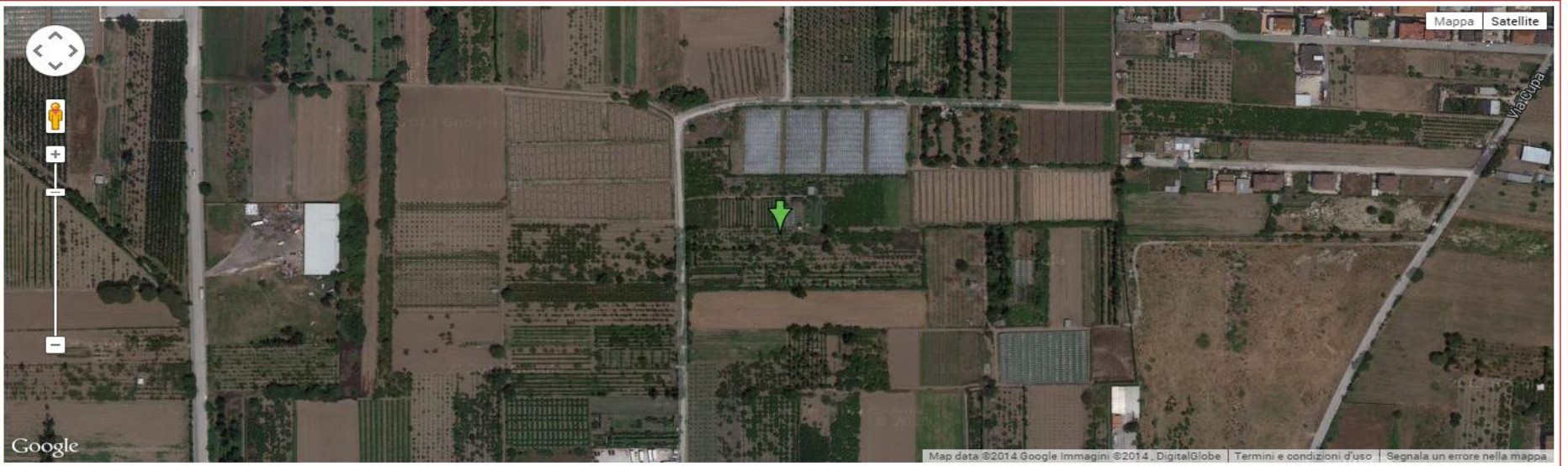


| | |
|-----------------|--|
| Camera: | Samsung GT-I9301I |
| Lens: | 3.7 mm (Max aperture f/2.6) (shot wide open) |
| Exposure: | Auto exposure, Program AE, 1/468 sec, f/2.6, ISO 80 |
| Flash: | none |
| Date: | November 27, 2014 9:30:23AM (timezone not specified) (9 hours, 4 minutes, 53 seconds ago, assuming image timezone of 1 hour ahead of GMT) |
| Location: | Latitude/longitude: 40° 58' 52.8" North, 14° 9' 45.8" East (40.981331, 14.162726) Location guessed from coordinates: <i>Via Larga, 81038 Trentola-ducenta CE, Italia</i> Map via embedded coordinates at: Google , Yahoo , WikiMapia , OpenStreetMap , Bing (also see the Google Maps pane below) Altitude: 43 meters (141 feet) below sea level Timezone guess from earthtools.org: 1 hour ahead of GMT |
| File: | 2,448 × 3,264 JPEG (8.0 megapixels) |
| Color Encoding: | WARNING: Color space tagged as sRGB, without an embedded color profile. Windows and Mac browsers and apps treat the colors randomly. Images for the web are most widely viewable when in the sRGB color space and with an |

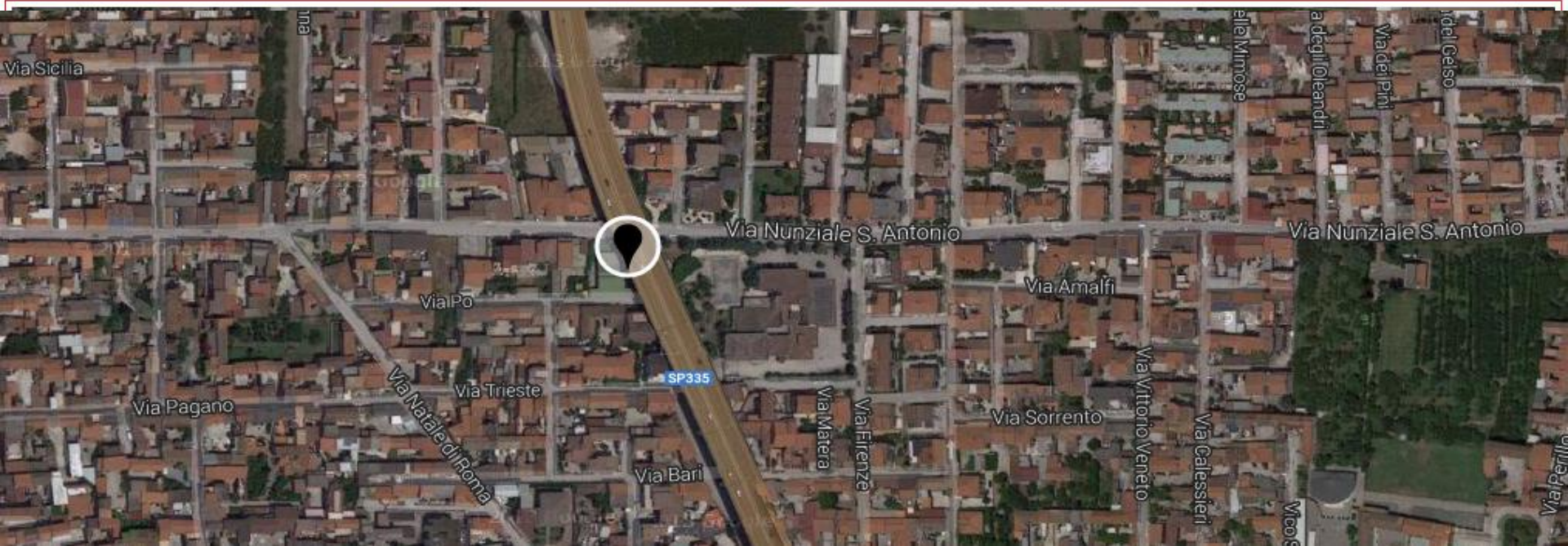
Extracted 512 × 384 48-kilobyte "Composite: TH
Displayed here at 100% width (0% the area of the original)



Click image to isolate; click this text to show histogram



Titolo: 20141127_095319
Tipo: JPEG
Data: 27/11/2014 09:53
Album: Camera
Posizione : Campania,
Caserta, Trentola-ducenta,
Italia
Latitudine:
40.97926330566406
Longitudine:
14.180468559265137
Dimensioni: 3,2 MB
Risoluzione: 3264x2448
Orientamento: 0°
Produttore: SAMSUNG
Modello: GT-I9301I





28 Nov-2014 ore 23



27 Nov-2014 ore 9.53

